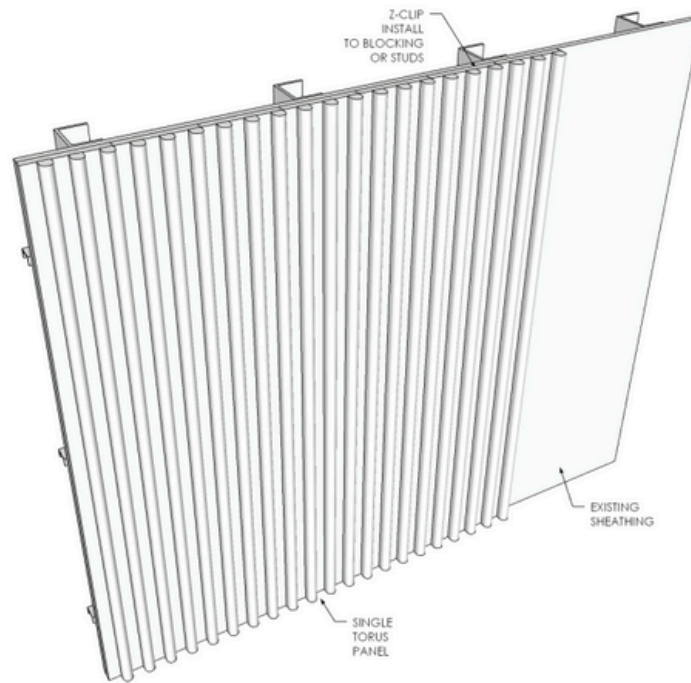


# TORUS SLAT WOOD WALL & CEILING PANELS



## PRODUCT SPECIFICATIONS

SLAT DIMENSIONS	Overall standard thickness is 11/16" Panels include a 3/4" thick nominal veneered backer (11/16") Standard individual slat size is 1" face, 1" visible depth (1 1/16" depth, routed 1/16" into backer)
PANEL WIDTH	Panel supplied up to 4' maximum Can be butted together seamlessly
PANEL HEIGHT	Standard height is 8' Up to 10' available (price increase)
MINIMUM	100sf for 2' x 8' panels 200sf for custom size panel
FINISH	Unfinished or prefinished - see next page
INSTALLATION	Typically installed with Z clips - see next page
CUSTOM	Custom slat and panel sizes available

NOTE: Pricing of all solid wood and veneer products experience fluctuations. Please reach out for current pricing for your specific project

# TORUS SLAT WOOD WALL & CEILING PANELS

---

## PRODUCT DATA

**Description:** Three-dimensional wall panels with solid wood slats on MDF.

**Species Options:** Select White Oak, Select Walnut, Select Ash, Select Paint Grade Poplar

**Source Options:** Domestic Timber (Midwest), FSC® Certified Available on Request (FSC-C199866)

**Dimensions:** 4'x8' panels standard

**Weight:** 3.75-4lbs per SF

**Core:** 11/16" MDF, NAF, TSCA Title VI Compliant, Class A Fire Rated and/or FSC Certified Core available on request (FSC-C199866)

**Finish Options:** Matte Clear, Premium Oil, Smoke, Custom Stain

**Additional Options:** Trim and corner pieces available for an additional charge. Unfinished slatted wall panels are available upon request

**Site Conditions:** For most installations, we recommend a climatic temperature between 55 to 75 degrees Fahrenheit and 30% to 50% humidity level. Environments that do not meet these criteria will cause wood to experience shrinking and swelling issues that damage the product. We cannot guarantee our product's performance in such environments.

**Installation:** Installation materials are not included and must be purchased separately. For wall installation, we recommend using MF375 Monarch Z-Clips. For ceiling installations, we recommend using MFCEIL-H Monarch Ceiling Clips. Please reach out to the hardware manufacturer for specific product considerations

**Grain and Allowances:** Natural color variation will occur across panels. White Oak and Walnut panels may include sapwood up to 10% of total panel. Small, sound pin knots may occur in solid wood slats.

**LEED:** Urban Evolutions veneer panels may contribute toward satisfying the following credits under LEED® v4.1:

M&R – Material Ingredients – Declare

M&R – Sourcing of Raw Materials – Material Reuse (Urban Wood), Wood Products (FSC)

IEQ – Low-Emitting Materials – VOC Emissions Evaluation

**Human Health:** Certified Clean Air GOLD (CDPH Compliant), Declare Red List Free

**End of Life:** Panels can be reused in their entirety. Learn more through our [UE Takeback Reuse Program](#).

For further information, please reach out to the following team members:

- Sustainability Inquiries – [Emma@urbanevolutions.com](mailto:Emma@urbanevolutions.com)
- Specification & Product Inquiries – [Matt@urbanevolutions.com](mailto:Matt@urbanevolutions.com)



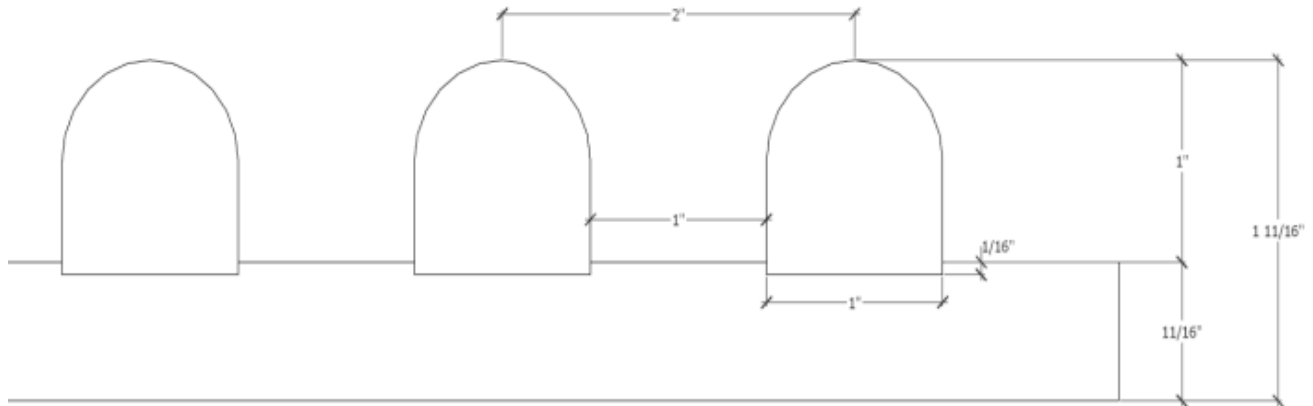
URBAN EVOLUTIONS  
materials that drive design

(920) 380-4149  
2401 W. College Ave Appleton, WI 54914  
[urbanevolutions.com](http://urbanevolutions.com)

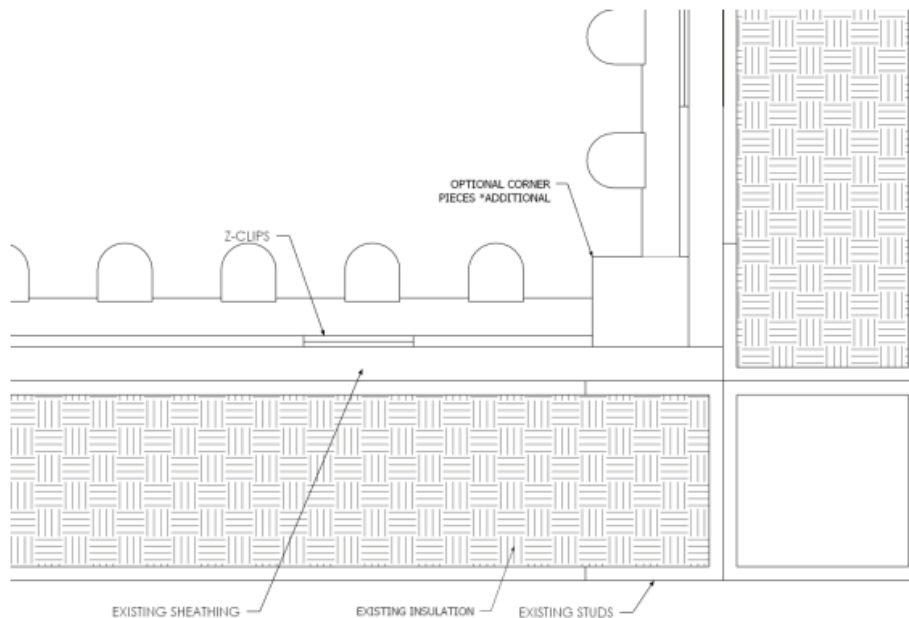
# TORUS SLAT WOOD WALL & CEILING PANELS

## PRODUCT IMAGES

### Slat Dimensions



### Corner Pieces Top View

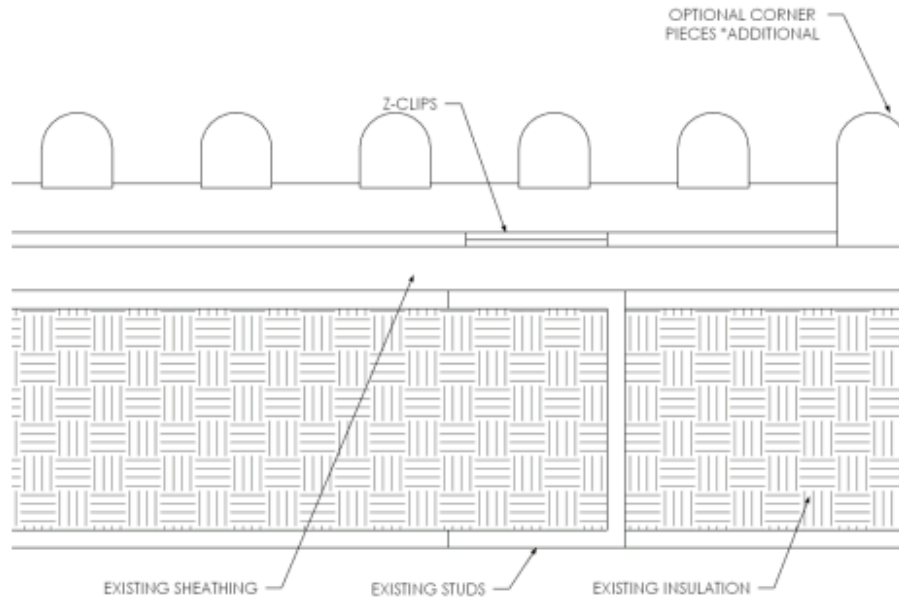


# TORUS SLAT WOOD WALL & CEILING PANELS

---

## PRODUCT IMAGES

### Edge Piece Top View



### Veneer Edge Top View

